

A predictable pattern in renal denervation



INTRODUCING

ENLIGHTNTM

MULTI-ELECTRODE RENAL DENERVATION SYSTEM

FOR THE TREATMENT OF HYPERTENSION



ST. JUDE MEDICALTM

MORE CONTROL. LESS RISK.

AN ENLIGHTENED APPROACH TO — RENAL DENERVATION —

THE ENLIGHTN™ MULTI-ELECTRODE RENAL DENERVATION SYSTEM enables cutting-edge efficiencies in procedural-based hypertension control by reducing the number of catheter manipulations needed to disrupt the sympathetic nerve network — with unparalleled speed and placement accuracy.¹⁻³ Renal denervation has been proven to effectively reduce systolic blood pressure.⁴

THE POWER OF MULTI-ELECTRODE ABLATION

■ FAST

EnlightN administers a consistent pattern of four ablations with each placement — in 90-second intervals — potentially reducing renal denervation procedure time.^{2,3}

■ EFFICIENT

Unique multi-ablation basket design provides four ablations without readjustment.

■ PRECISE

Consistent, four-point contact with arterial wall designed to increase procedural accuracy.

■ MINIMIZED EXPOSURE

Minimal catheter repositioning may result in shorter procedure time, reduced contrast and fluoroscopic exposure.



A BREAKTHROUGH TECHNOLOGY — ON MANY POINTS

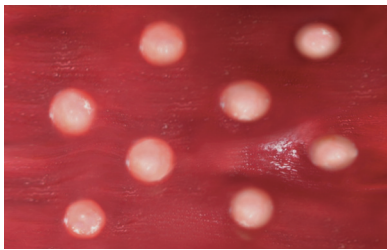
PREDICTABLE PATTERN. REPEATABLE RESULTS.

The EnligHTN renal denervation system is the first, multi-electrode ablation technology to deliver a pre-determined ablation set in a single positioning. The electrodes on the EnligHTN basket administer a repeatable pattern of evenly spaced ablations with each placement.

THE BENEFITS OF MULTI-ELECTRODE ABLATION¹⁻³

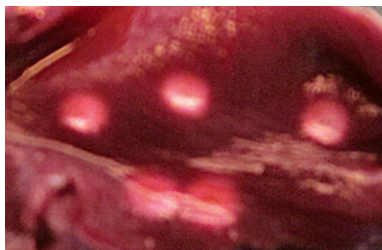
- Unique basket design reduces variability.
- Consistent placement of ablation sets enables repeatable results, minimal manipulations with the potential to save time and leave less room for error.

ENLIGHTN MULTI-ELECTRODE ABLATION¹



Precision Pattern

SINGLE-ELECTRODE ABLATION¹



Random Pattern

THE REWARDS OF A PREDICTABLE PATTERN

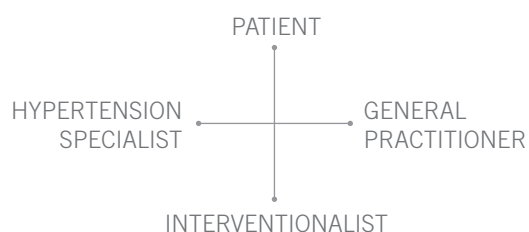
The EnligHTN system delivers a repeatable ablation pattern using four evenly spaced electrodes for fast, precise renal denervation.

- Multi-electrode basket requires minimal adjustments and may lead to a faster renal denervation procedure.
- Less procedure time may enable workflow and cost efficiencies.
- The EnligHTN RF generator uses a proprietary, temperature-controlled algorithm developed to produce transmural lesions for effective denervation.^{1,2}

HYPERTENSION AFFECTS MORE THAN ONE BILLION PEOPLE WORLDWIDE⁵

For a large subset, despite aggressive pharmacological regimens, hypertension control overall remains low.⁶

St. Jude Medical, together with dedicated professionals in the treatment continuum, can offer new solutions for hospitals and a lasting impact on our communities and health care system by advancing the technology of renal denervation and the treatment of hypertension.⁷



THE POWER OF TEAMWORK





PREDICTABLE
REPEATABLE
RELIABLE

YOUR PARTNER IN RENAL DENERVATION SOLUTIONS

The EnligHTN renal denervation system offers advanced renal artery ablation therapy. St. Jude Medical, a market leader in ablation therapy, is committed to delivering innovative technologies to improve clinical outcomes and cath lab efficiency — with a broad portfolio of practical solutions to optimize renal denervation therapy and the treatment of hypertension.

Ordering Information

EnligHTN Renal Denervation System

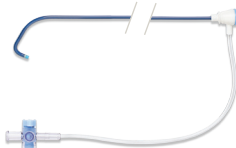
Reorder Number	Product Name	Description
ENL-LG-01	EnligHTN Renal Artery Ablation Catheter - large	8 F compatible, Multi-Electrode Renal Ablation Catheter; 18 mm basket length; 115 cm working length
ENL-SM-01	EnligHTN Renal Artery Ablation Catheter - small	8 F compatible, Multi-Electrode Renal Ablation Catheter; 16 mm basket length; 115 cm working length
ENL-T115	EnligHTN RF Ablation Generator	RF Ablation Generator package includes: Generator, Generator Power Cord, 1641 Connector Cable, IFU
ENL-8F55	EnligHTN Guiding Catheter	8 F Guiding Catheter with hemostatic hub and dilator; 0.088" I.D., 55 cm length; RCD-1
ENL-CC-01	EnligHTN 1641 Connector Cable	Reusable cable that connects the EnligHTN Ablation Catheter to the Generator
PREP-01	Patient Return Electrode	Patient Return Electrode used for standard electrosurgical patient preparation
ENL-PC-01	EnligHTN Power Cable	Replacement Generator Power Cord



**EnligHTN Renal Artery
Ablation Catheter**



**EnligHTN RF Ablation
Generator**



EnligHTN Guiding Catheter

1. St. Jude Medical. Data on file.
2. St. Jude Medical Instruction for Use, Ablation Catheter #10006654702, Generator #10006927602.
3. Medtronic Symplicity Instruction for Use.
4. Esler M, Krum H, Sobotka P, et al. Renal sympathetic denervation in patients with treatment-resistant hypertension (The Symplicity HTN-2 Trial): a randomized controlled trial. *Lancet*. 2010;376(9756):1903-9.
5. Kearney PM, Whelton M, Reynolds K, et al. Global burden of hypertension: Analysis of worldwide data. *Lancet*. 2005;365(9455):217-23.
6. Wolf-Maier, K, Cooper RS, Kramer H, et al. Hypertension treatment and control in five European countries, Canada, and the United States. *Hypertension*. 2004;43:10-17.
7. ClinicalTrials.gov #NCT01438229.

ATRIAL FIBRILLATION

CARDIAC RHYTHM MANAGEMENT

CARDIOVASCULAR

NEUROMODULATION

Global Headquarters

One St. Jude Medical Drive
St. Paul, Minnesota 55117
USA
+1 651 756 2000
+1 651 756 3301 Fax

Cardiovascular Division

177 East County Road B
St. Paul, Minnesota 55117
USA
+1 651 756 4470
+1 651 756 4466 Fax

SJM Coordination Center BVBA

The Corporate Village
Da Vincilaan 11 Box F1
1935 Zaventem, Belgium
+32 2 774 68 11
+32 2 772 83 84 Fax

St. Jude Medical (Hong Kong) Ltd.

Suite 1608, 16/F Exchange Tower
33 Wang Chiu Road
Kowloon Bay, Kowloon
Hong Kong SAR
+852 2996 7688
+852 2956 0622 Fax

St. Jude Medical Brasil Ltda.

Rua Itapeva, 538
5º ao 8º andar
01332-000 – São Paulo – SP
Brazil
+55 11 5080 5400
+55 11 5080 5423 Fax

St. Jude Medical Japan Co., Ltd.

Shiodome City Center 15F
1-5-2, Higashi-Shinbashi
Minato-ku
Tokyo 105-7115
Japan
+81 3 6255 6370
+81 3 6255 6371 Fax

SJMenligHTN.com
SJMprofessional.com



ST. JUDE MEDICAL
MORE CONTROL. LESS RISK.

Product referenced is approved for CE Mark.

EnligHTN, ST. JUDE MEDICAL, the nine-squares symbol and MORE CONTROL. LESS RISK. are registered and unregistered trademarks and service marks of St. Jude Medical, Inc. and its related companies.

©2012 St. Jude Medical, Inc. All rights reserved.

Item GMVASC381EN IPN 2158-12